

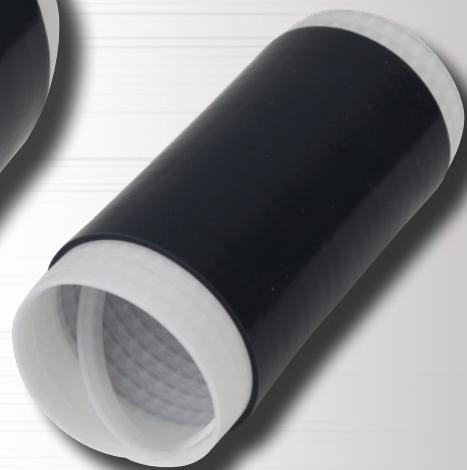
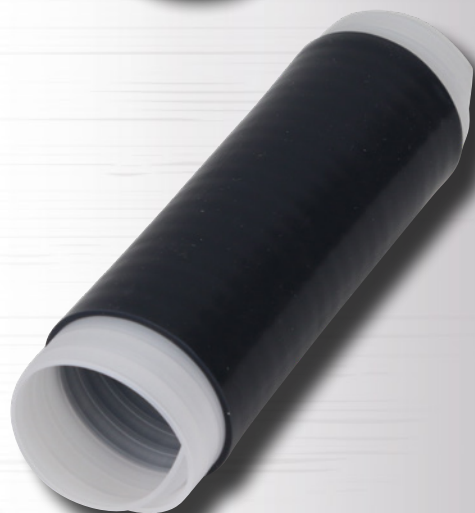
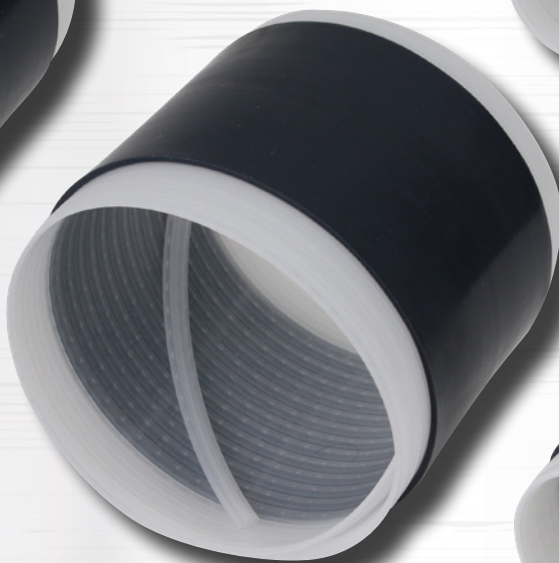
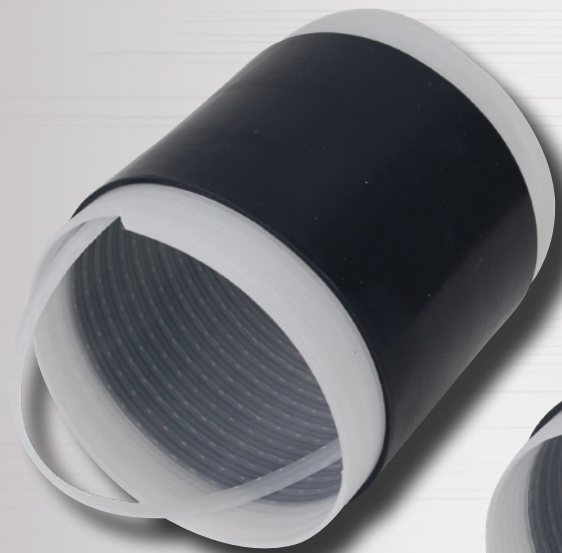
HZS

Tuburi contractabile la rece



| TRACON | D1 (mm) | D2 (mm) | S (mm) | L (mm) | |
|------------|---------|---------|--------|--------|--|
| HZS28-100 | 28 | 12 | 2,5 | 100 | |
| HZS36-100 | 36 | 19 | 2,5 | 100 | |
| HZS54-100 | 54 | 32 | 2,5 | 100 | |
| HZS92-100 | 92 | 39 | 3,0 | 100 | |
| HZS105-100 | 105 | 45 | 3,0 | 100 | |
| HZS28-200 | 28 | 12 | 2,5 | 200 | |
| HZS36-200 | 36 | 19 | 2,5 | 200 | |
| HZS54-200 | 54 | 32 | 2,5 | 200 | |
| HZS92-200 | 92 | 39 | 3,0 | 200 | |
| HZS105-200 | 105 | 45 | 3,0 | 200 | |
| HZS28-400 | 28 | 12 | 2,5 | 400 | |
| HZS36-400 | 36 | 19 | 2,5 | 400 | |
| HZS54-400 | 54 | 32 | 2,5 | 400 | |
| HZS92-400 | 92 | 39 | 3,0 | 400 | |
| HZS105-400 | 105 | 45 | 3,0 | 400 | |

Tuburi contractabile la rece pe bază de silicon pentru izolarea conexiunilor electrice. Datorită tehnologiei asigură o etanșare flexibilă a legăturilor, nu sunt necesare unelte speciale sau flacăra. Prin desfășurarea spiralei de sprijin tubul se micșorează pe cablul pregătit anterior. Datorită forței constante de strângere, oferă etanșare împotriva pătrunderii apei.




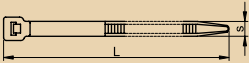





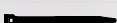




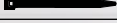
TRACON
ELECTRIC®

310045 Arad, Str. Liviu Rebreanu nr. 7. • Telefon: +40 257 273 376, 273117
www.traconelectric.com • tracon@traconelectric.com • comenzi@traconelectric.com

Informații suplimentare la distribuitorii noștri!


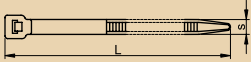



...CS

Fașete cu gaură de fixare

| TRACON |  |  |  |  |  |
|--------|---|---|--|---|---|
| 110-CS |  | 110 × 2.5 mm | 3 - 19 mm | 45 N | M2.5 |
| 150-CS |  | 150 × 3.6 mm | 3 - 35 mm | 80 N | M4 |
| 160-CS |  | 160 × 4.8 mm | 3 - 36 mm | 110 N | M5 |
| 200-CS |  | 200 × 4.8 mm | 3 - 49 mm | 110 N | M5 |
| 300-CS |  | 300 × 4.8 mm | 3 - 82 mm | 110 N | M5 |
| 310-CS |  | 300 × 7.6 mm | 8 - 78 mm | 250 N | M6 |
| 370-CS |  | 370 × 4.8 mm | 3 - 103 mm | 110 N | M5 |
| 400-CS |  | 400 × 7.6 mm | 8 - 109 mm | 250 N | M6 |



CSKT Talpă de fixare pe muchie, cu fașetă

| TRACON |  |  |  |  |
|--------|---|---|---|---|
| CSKT |  | 4,8 × 200 mm | 3 - 49 mm | 110 N |

